

Experts' Consultation Meeting on Violence Against Women

16-17 November,
2016, Vilnius



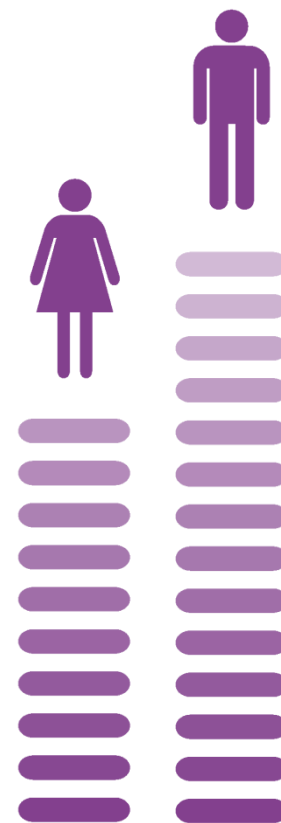


Linking the composite measure of violence against women to the Gender Equality Index



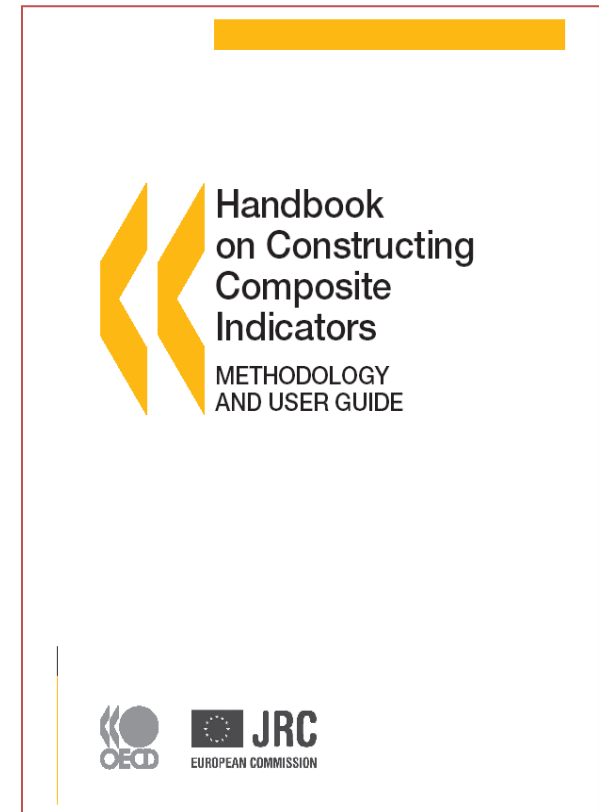
- to measure **gender equality** throughout the Member States and the EU;
- to allow an analysis **over time** and **geographical areas**;
- to focus on the situation of women and men **overall** and in **selected areas** of concern;
- to support the evaluation of the **effectiveness** of the **measures** and **policies**

Gender gaps adjusted for levels of achievement



10 guiding principles

- Step 1. Developing a conceptual framework
- Step 2. Selecting indicators
- Step 3. Multivariate analysis
- Step 4. Imputation of missing data
- Step 5. Normalisation of data
- Step 6. Weighting and aggregation
- Step 7. Robustness and sensitivity
- Step 8. Links to other indicators
- Step 9. Back to the details
- Step 10. Presentation and dissemination





Selecting the variables: criteria

Conceptual criteria



- Focus on **individuals**
- **Outcome** variables

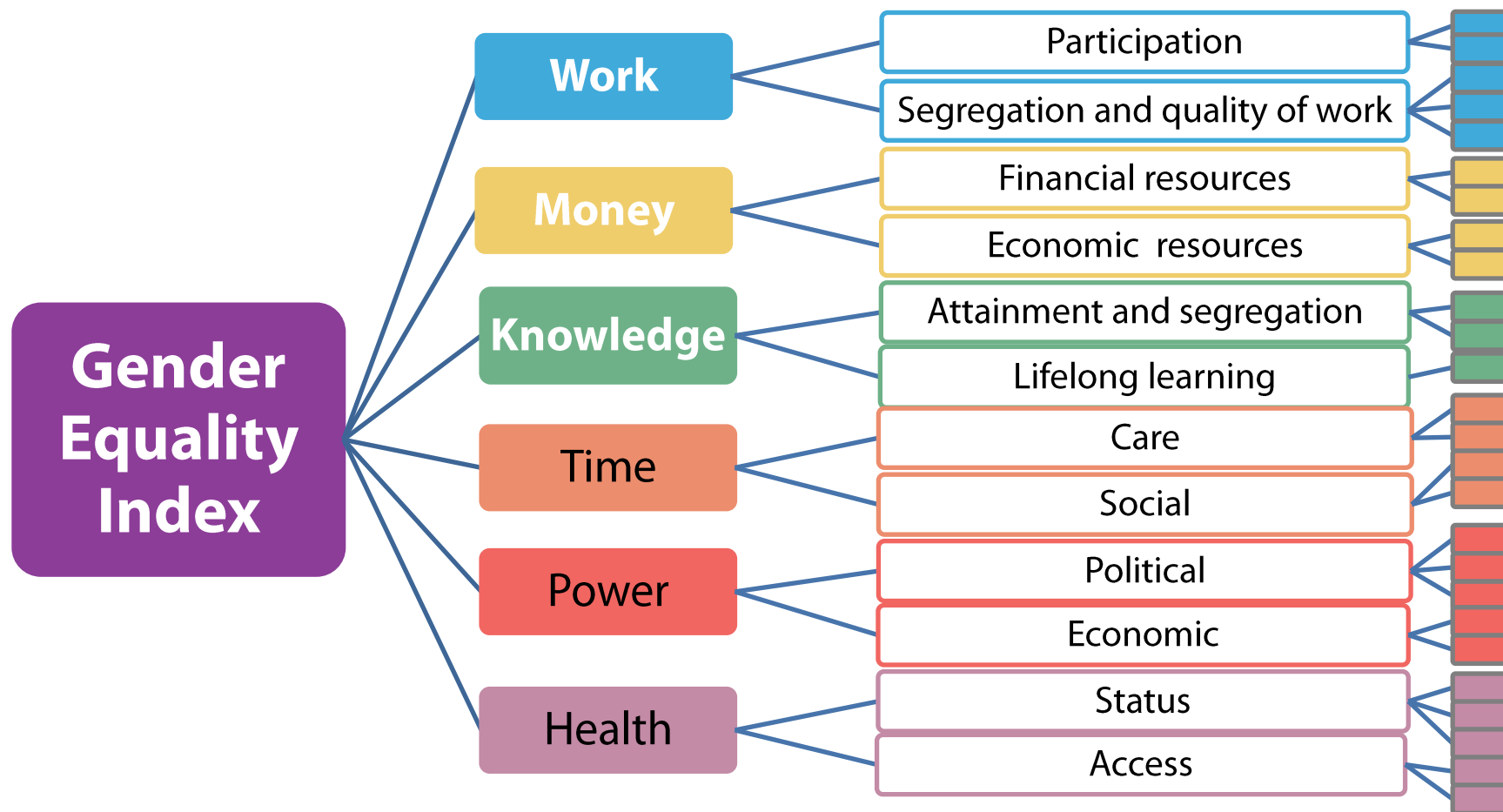
Quality criteria



- **Reliable**
- **Comparable** over time
- **Harmonised** at EU level
- No more than **10% missing** data points



Aggregation and weighting



Aggregation and weighting

Aggregation

Weighting

VARIABLES

Arithmetic



Equal

SUB-DOMAINS

Geometric



Equal

DOMAINS

Geometric



Experts' weights

GENDER EQUALITY INDEX

The Gender Equality Index

$$I_i^* = \prod_{d=1}^6 \left\{ \prod_{s=1}^{12} \left(\sum_{v=1}^{27} w_v \Gamma(X_{idsv}) \right)^{w_s} \right\}^{w_d}$$

$$i = 1, \dots, 27$$

$$d = 1, \dots, 6$$

$$s = 1, \dots, 12$$

$$v = 1, \dots, 27$$

$$w_v, w_s, w_d \in [0,1]$$

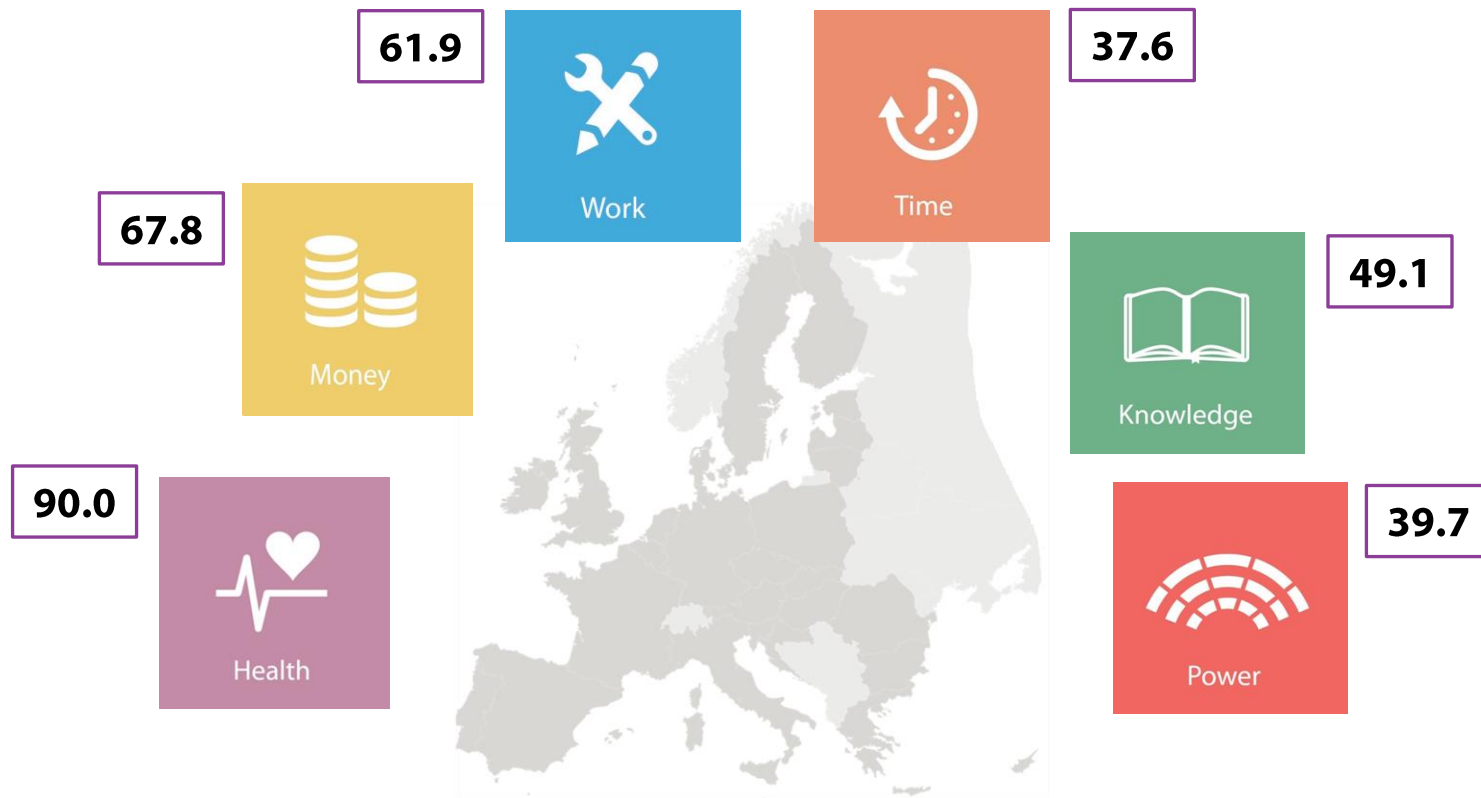
$$\sum w = 1$$

Inequality

Equality

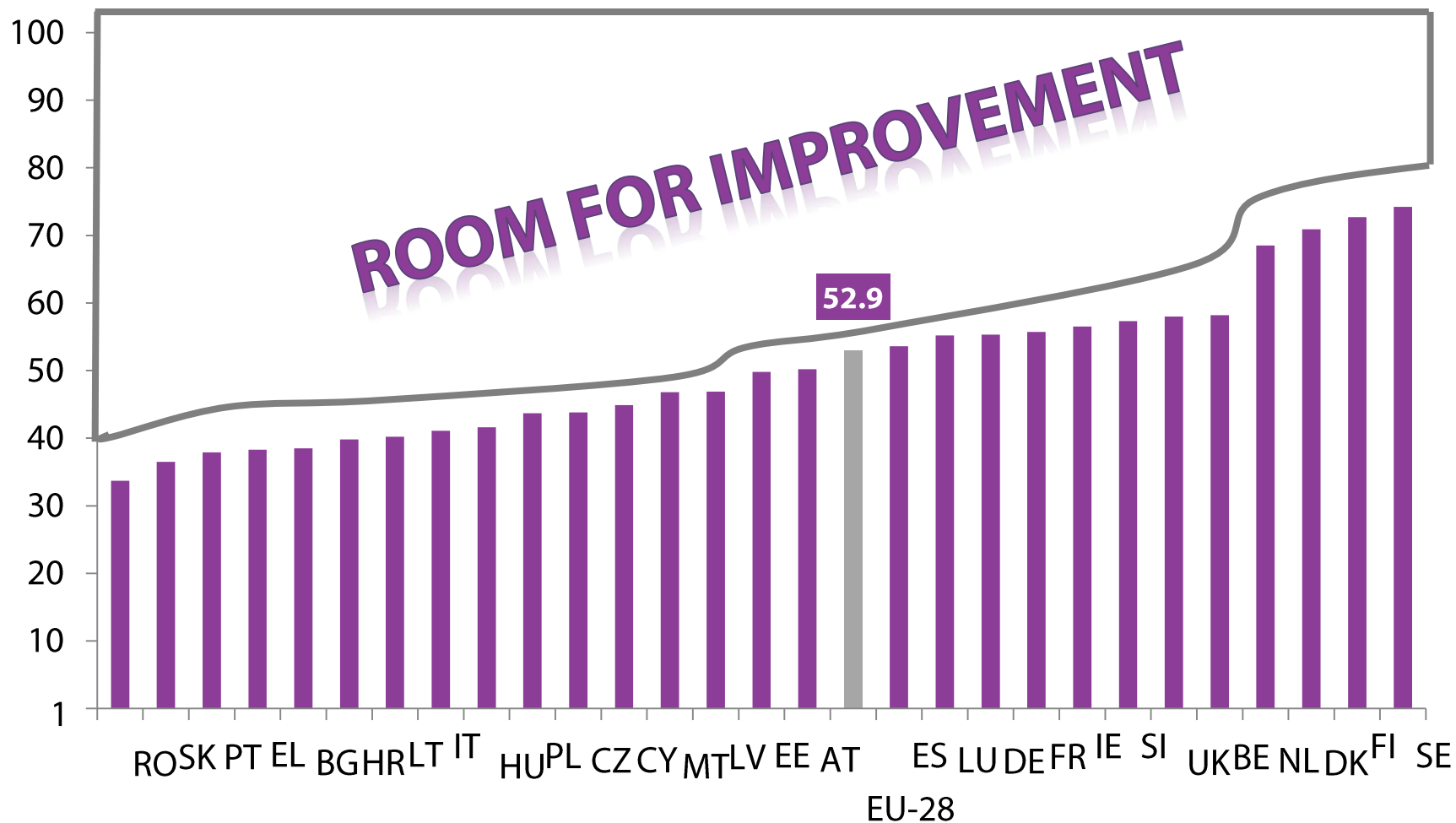
1

100





Gender Equality Index



Development of the satellite domain of violence

Step 1: Building a composite indicator of violence against women

Step 2: Linking the composite measure of violence against women to the Gender Equality Index

Options for discussion: two general approaches

Once the core set of indicators on VAW has been aggregated into a numerical score

Option a: Subtract points from countries' Gender Equality Index scores. The higher the measure of violence, the more points subtracted

Option b: Integrate the composite score of violence into the calculation of the Gender Equality Index score.

Option a- two ways

Option a-1:

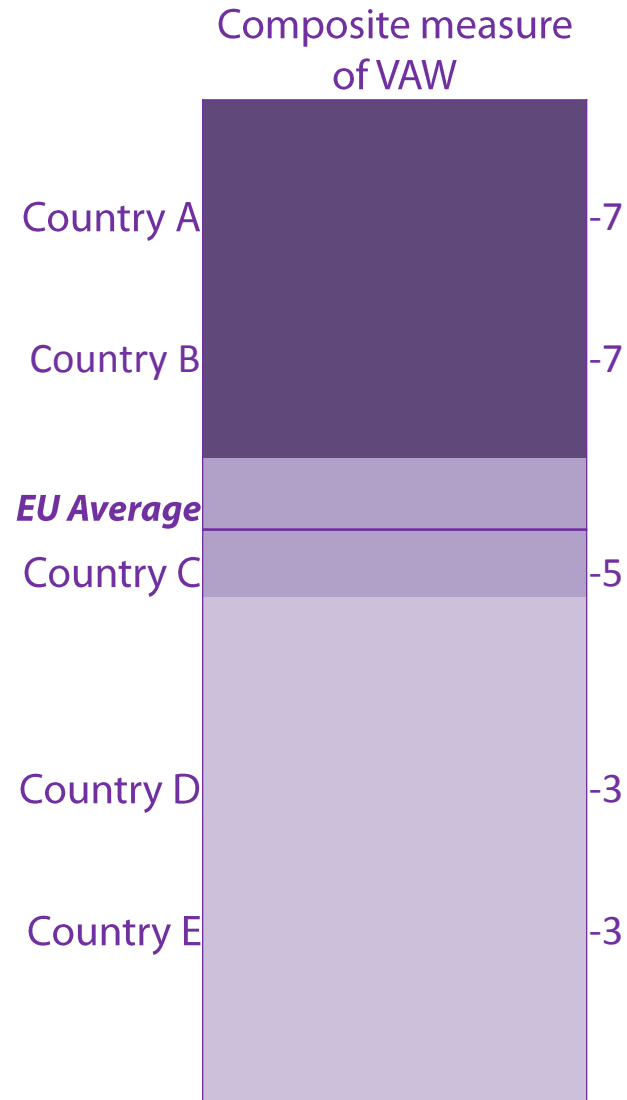
- Deduct points from countries' Gender Equality Index scores according to **their position vis a vis the EU average.**

For example:

- **Composite measure of VAW > EU average → minus 7 points**
- **Composite measure of VAW = EU average → minus 5 points**
- **Composite measure of VAW < EU average → minus 3 points**

Option a-1 example

Option a-1:



Option a-1: advantages and disadvantages

Advantages	Disadvantages
<ul style="list-style-type: none">• Intuitive understanding: when violence decreases, gender equality progresses• Tiers classification reflects the sensitivity of measuring violence against women	<ul style="list-style-type: none">• EU average as benchmark rather than complete elimination of violence• Not tailored to individual countries' score• More difficult to track individual countries progress

Option a- two ways

Option a-2:

Deduct points from countries' Gender Equality Index scores **on the basis of their ranking against each other**. Countries will be ranked from 1 to 28.

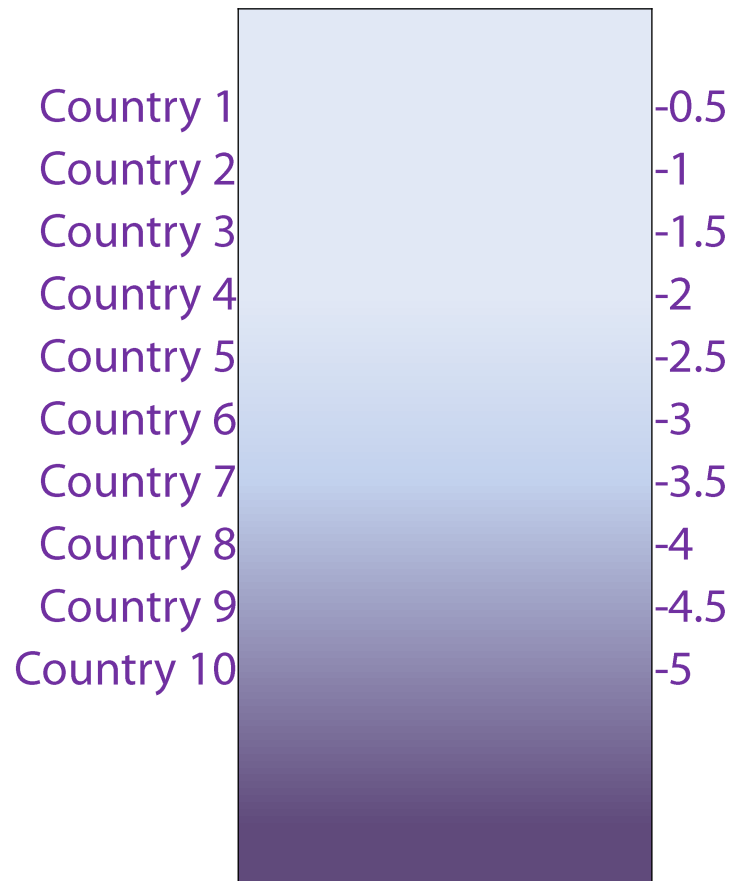
For example: on a scale from 0 to 14 points

- **Country X at 3rd rank, deduct 1.5 points**
- **Country Y at 10th rank, deduct 5 points**

Option a-2 example

Option a-2:

Composite measure of VAW



Option a-2: advantages and disadvantages

Advantages

- Easier to track individual countries progress
- Impact on GEI is tailored to individual countries scores.

Disadvantages

- Less intuitive understanding
- Impact on GEI score determined by other countries

Option b

Integrate the composite score of violence into the calculation of the Gender Equality Index score along the other domains.

Option b: advantages and disadvantages

Advantages

- Easier to track individual countries progress
- Impact on GEI is tailored to individual countries scores.
- Potential harmonization with other satellite

Disadvantages

- Satellite domains are based on a distinct metric than domains
- Difficulty in communicating several GEI scores



Group discussion:

What do you think of the suggested options to link the composite measure of violence to the Gender Equality Index score?

Any preference for option a1, a-2 or b?